

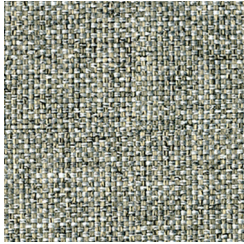
**RIVET**

Grade 2 - Panel Fabric  
Grade A - Seating Fabric

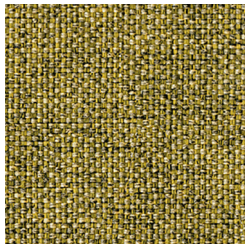
Trendway >



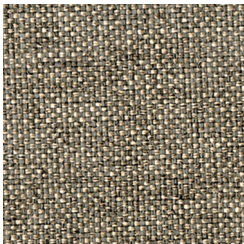
Resin - KW3



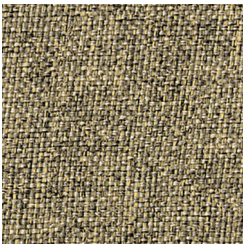
Vitreous - KWA



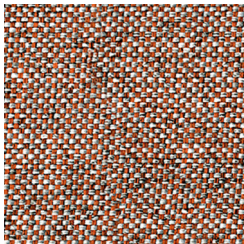
Spark - KW5



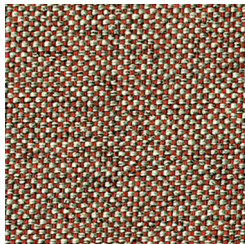
Cast - KVD



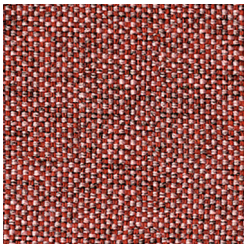
Wire - KWC



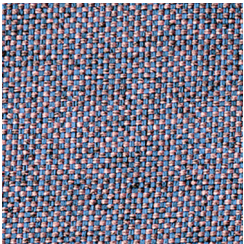
Molten - K VX



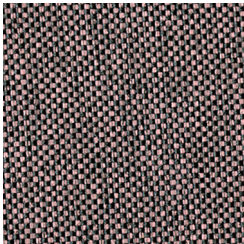
Abraid - KV9



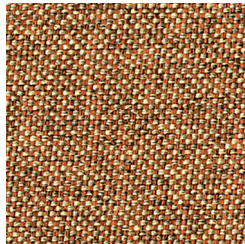
Forge - KVN



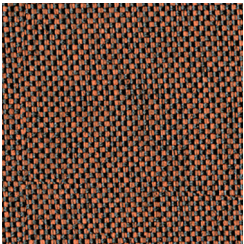
Fuse - KVP



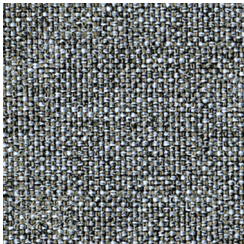
Woodrose - KWD



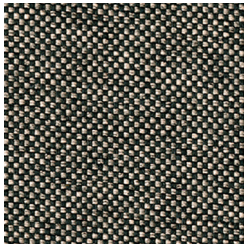
Copper - KVG



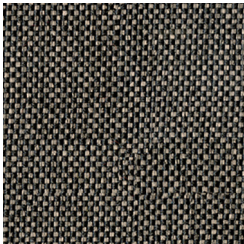
Deep Clay - KVJ



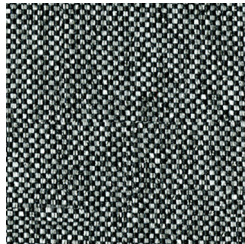
Solder - KW4



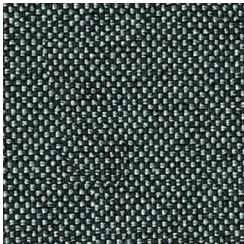
Twig - KW8



Otter - KW0



Grey Brindle - KVT

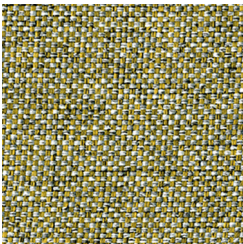


Charcoal - KVE

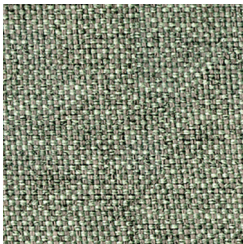


**RIVET**

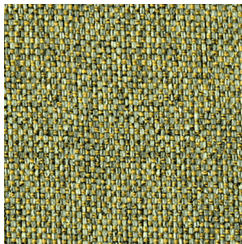
Grade 2 - Panel Fabric  
Grade A - Seating Fabric



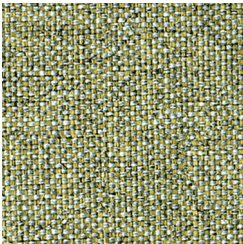
Alloy - KVA



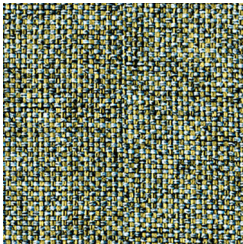
Ferrous - KVM



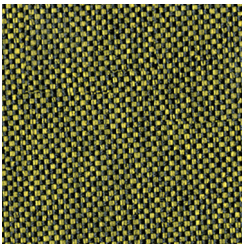
Tungsten - KW7



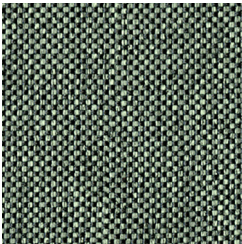
Burnish - KVC



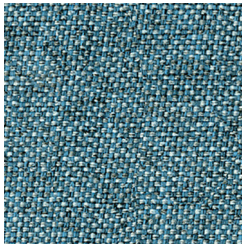
Chromoly - KVF



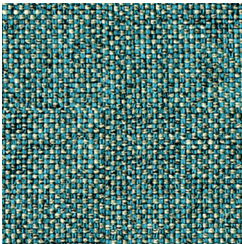
Olive - KVY



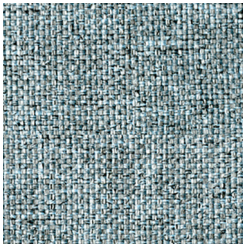
Hemlock - KVV



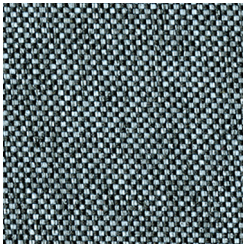
Quench - KW2



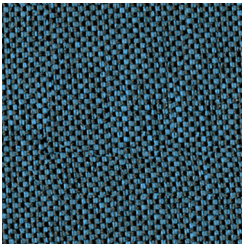
Verdigris - KW9



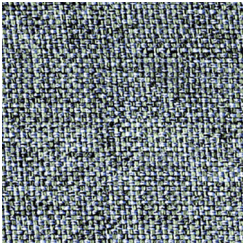
Prime - KW1



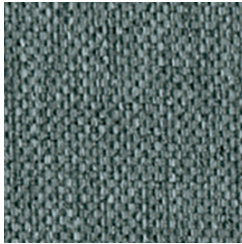
Deep Sea - KVK



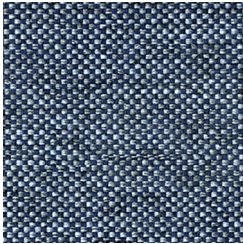
Lagoon - KVV



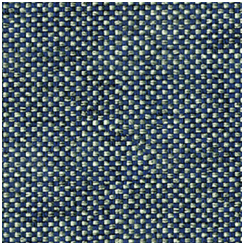
Tensile - KW6



Galvanise - KVR



Crucible - KVH



Hammer - KVV

**Trendway** >

# RIVET

<b>Application</b>	Consult current price lists for product applications
<b>Grade</b>	2 - Panel, A - Seating
<b>Pattern</b>	Directional
<b>Content</b>	100% Repreve® Post-Consumer Recycled Polyester
<b>Weight</b>	12.96 oz. per linear yard
<b>Width</b>	54"
<b>Colorfastness to Light</b>	40 Hours, Class 4
<b>Colorfastness to Crocking</b>	Grade 4 - Dry, Grade 3 - Wet
<b>Flammability Rating</b>	CA Technical Bulletin 117-2013 UFAC Fabric Classification - Class 1 NFPA 260 - Class 1 ASTM E84 - Class A
<b>UL Listed</b>	Meets UL requirements
<b>Manufacturer</b>	Camira
<b>Note</b>	Color may vary slightly between manufacturer's dye lots
<b>Care Instructions</b>	To keep fabric from becoming soiled, manufacturer recommends frequent vacuuming or light brushing to remove dirt and grime. Spot clean when necessary with mild solvent, upholstery shampoo or foam from a mild detergent. If the fabric becomes soiled overall, use a professional cleaning service.