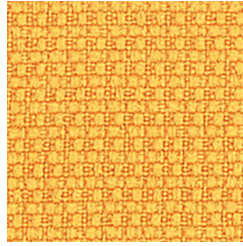
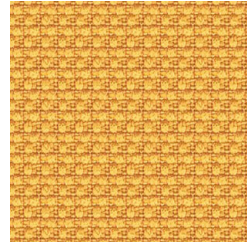


Bronx - KUR



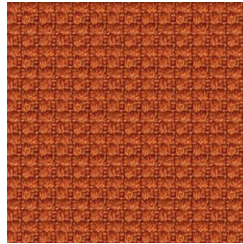
Murphy - KYR



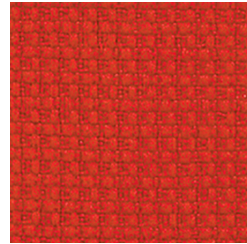
Taxi - KV6



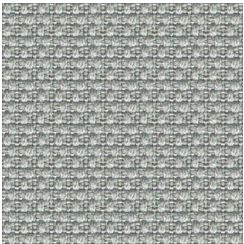
Lexington - KYT



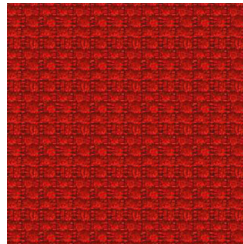
Houston - KUU



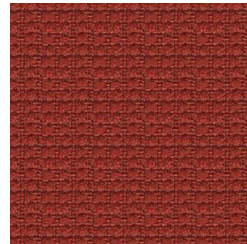
Hudson - KYU



Jackson - KUV



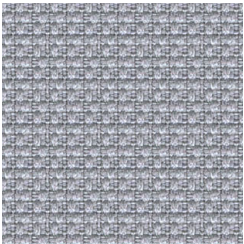
Monroe - KUY



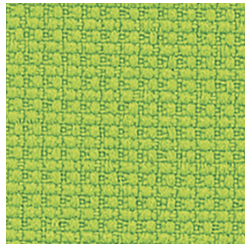
Soho - KV4



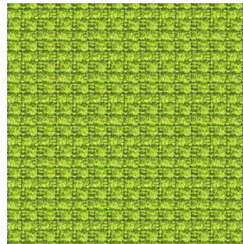
Sheridan - KYW



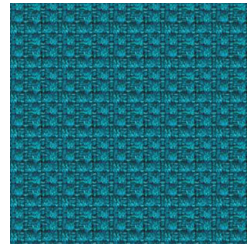
Varick - KV7



Ellis - KYV



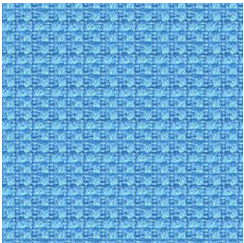
Park - KVO



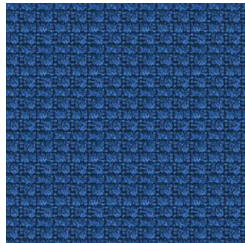
Leroy - KUW



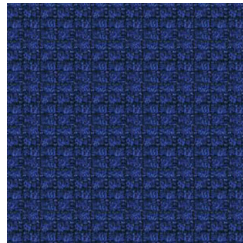
Penn - KV1



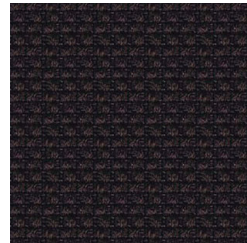
Watts - KV8



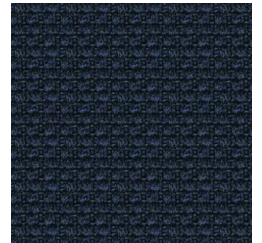
Astor - KUN



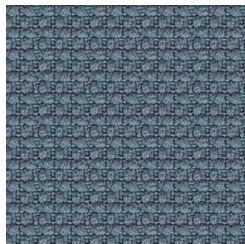
Staten - KV5



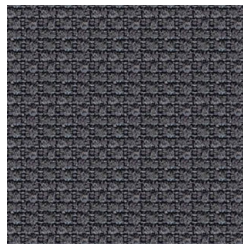
Capital - KUT



Rubin - KV2



Saks - KV3



Broadway - KUP



Chrysler - KYX



Macys - KUX

MANHATTAN

Application	Consult current price lists for product applications
Grade	A
Pattern	Directional
Content	100% Recycled Polyester
Weight	12.5 oz. per linear yard
Width	54"
Colorfastness to Light	40 Hours, Class 5
Colorfastness to Crocking	Grade 4 - Dry, Grade 3 - Wet
Flammability Rating	CA Technical Bulletin 117-2013 UFAC Fabric Classification - Class 1 NFPA 260 - Class 1
Manufacturer	Camira
Note	Color may vary slightly between manufacturer's dye lots
Care Instructions	To keep fabric from becoming soiled, manufacturer recommends frequent vacuuming or light brushing to remove dirt and grime. Spot clean when necessary with mild solvent, upholstery shampoo or foam from a mild detergent. If the fabric becomes soiled overall, use a professional cleaning service.