

---

# Less is More Materials

# LESS IS MORE PANEL FABRIC

## GRADE 0

### Framework

KK0	Capri	
KK1	Cappuccino	☛
BJ7	Dove Gray	☛
KK2	Espresso	☛
B4Y	Eucalyptus	☛
KJY	Fresco	
B4X	Gray Blue	☛
KJX	Grotto	☛
BFP	Hunter	☛
BFR	Marble	☛
BG7	Sand	
B4V	Sandy Pebble	☛
BG8	Twilight	☛

### Merge

Z42	Dove	☛
Z43	Driftwood	☛
Z44	Eucalyptus	☛
Z45	Fawn	☛
Z46	Fire Engine	☛
Z47	Graphite	☛
Z48	Graystone	
Z49	Green Apple	☛
Z4A	Ivy	☛
Z4C	Mandarin	☛
Z4D	Marshmallow	☛
Z4E	Mediterranean	
Z4F	Midnight	☛
Z4G	Silver Lining	
Z4H	Slate	☛
Z4J	Taupe	

## GRADE 2

### Tabby Weave

Z21	Baltic	
QQ3	Cement Mix	☛
175	Crystal Blue	☛
Z22	Eggshell	
238	Grey Mix	☛
QS0	Lake	
K99	Medium Gray	☛
Z23	Opal	
380	Quartz	☛
BV2	Silver Papier	☛
QT8	Stream	
Z24	Ultramarine	
150	Wedgewood	☛

## GRADE 3

### Anchorage

AR1	Angora	☛
AR0	Asteroid	☛
BF4	Aubergine	☛
AQ8	Birch	☛
BF9	Cobalt	☛
BFK	Coffee Bean	
AQ4	Cumin	
AQ7	Deep Water	☛
AQ3	Eucalyptus	
KWX	Fern	
AR3	Fossil	
BF3	Geranium	
BF8	Goldenrod	
AQ9	Goose	
BFM	Graphite	☛
BFF	Green Apple	☛
AQ2	Green Olive	
AR2	Henna	
BFA	Lapis	☛
KWY	Lemon	
BFD	Midnight	☛
BF5	Mulberry	
GEB	Onyx	☛
KX0	Orchid	
BFH	Pine Needle	
KX1	Pool	☛
BF6	Poppy	
BF2	Pumpkin	☛
AQ6	Quarry Blue	☛
BFN	Red Delicious	☛
BFE	Sea	
AQ5	Slate	☛
B9P	Straw	
BF1	Sunshine	
BFC	Thistle	☛
KX2	Turquoise	
AQ1	Vanilla	☛
BXP	Waterfall	☛
BFG	Willow	☛
BFJ	Wolf	☛

☛ = Trendway Standard Fabric



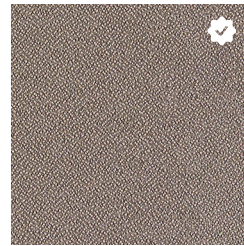
Dove Gray - BJ7



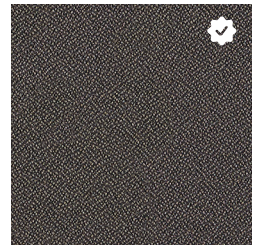
Grotto - KJX



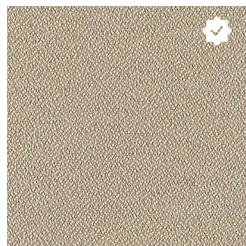
Fresco - KJY



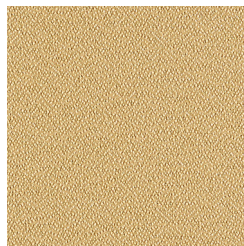
Cappuccino - KK1



Espresso - KK2



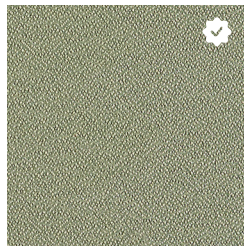
Sandy Pebble - B4V



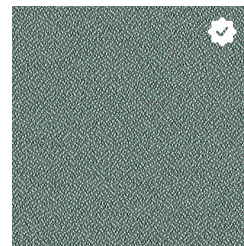
Sand - BG7



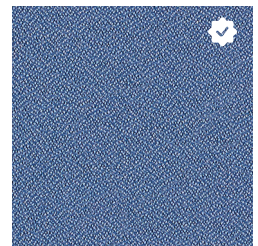
Capri - KKO



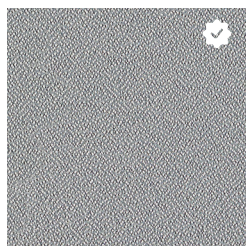
Eucalyptus - B4Y



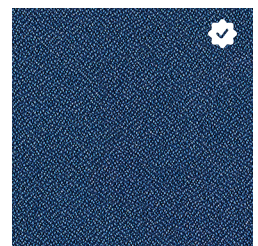
Hunter - BFP



Marble - BFR



Gray Blue - B4X



Twilight - BG8





Dove - Z42



Silver Lining - Z4G



Marshmallow - Z4D



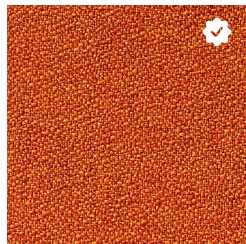
Driftwood - Z43



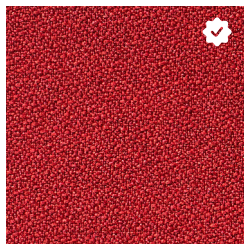
Fawn - Z45



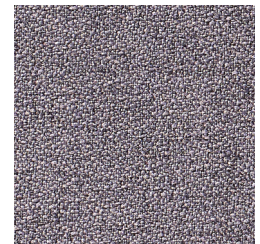
Taupe - Z4J



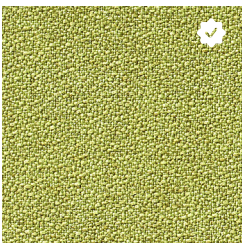
Mandarin - Z4C



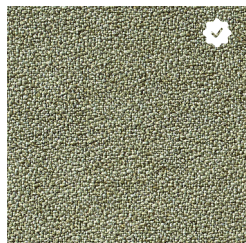
Fire Engine - Z46



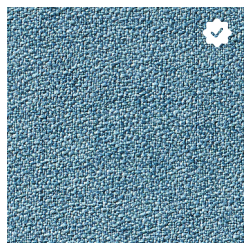
Graystone - Z48



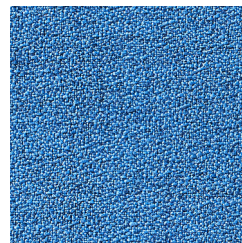
Green Apple - Z49



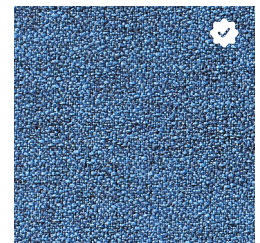
Ivy - Z4A



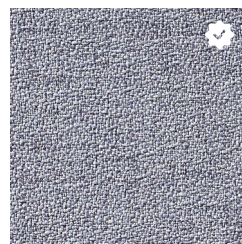
Eucalyptus - Z44



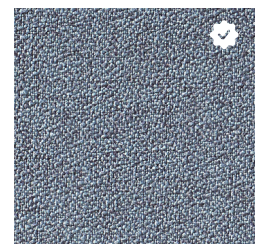
Mediterranean - Z4E



Midnight - Z4F

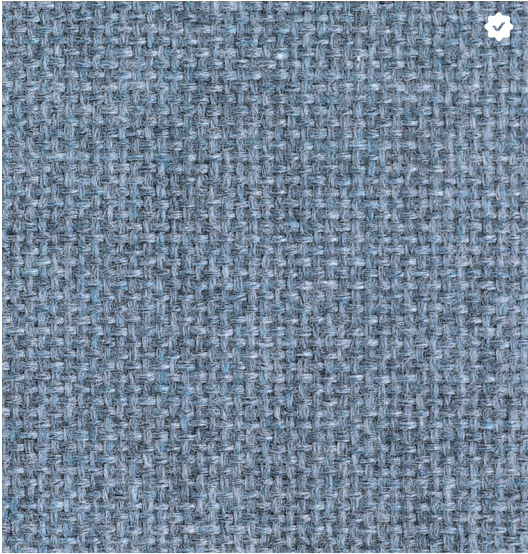


Graphite - Z47



Slate - Z4H





Wedgewood - 150



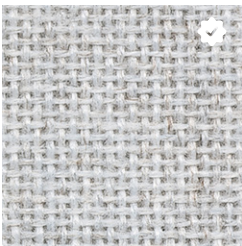
Quartz - 380



Eggshell - Z22



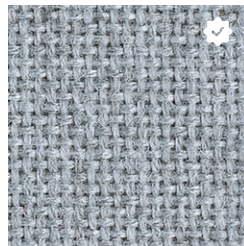
Stream - QT8



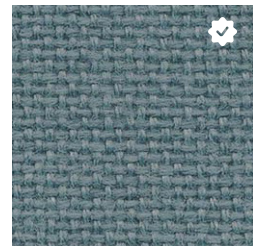
Silver Papier - BV2



Opal - Z23



Crystal Blue - 175



Lake - QS0



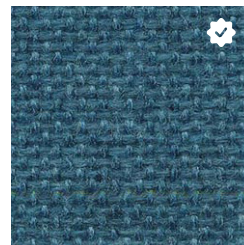
Gray Mix - 238



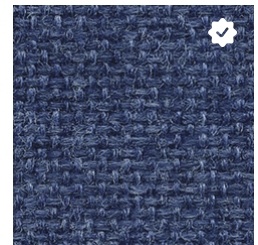
Cement Mix - QQ3



Medium Gray - K99

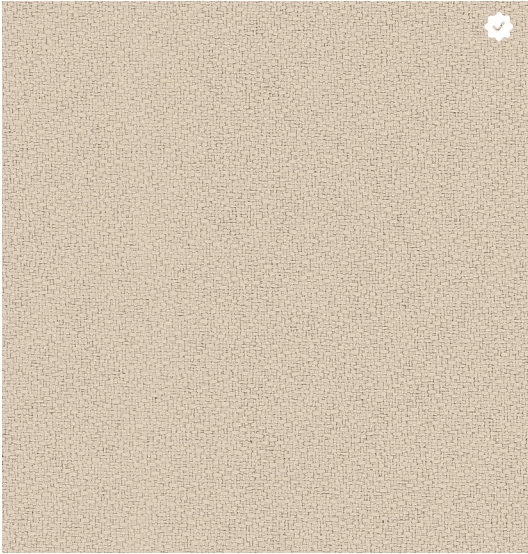


Ultramarine - Z24

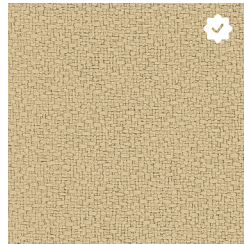


Baltic - Z21

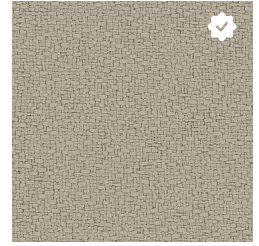




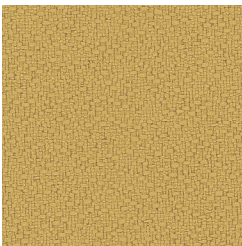
Birch - AQ8



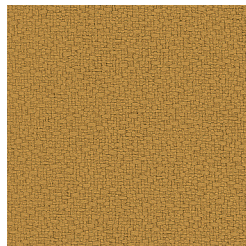
Vanilla - BFE



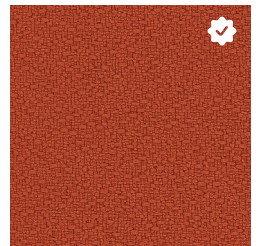
Angora - AR1



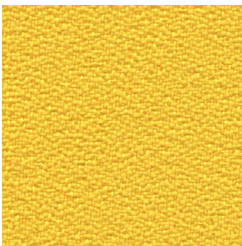
Straw - B9P



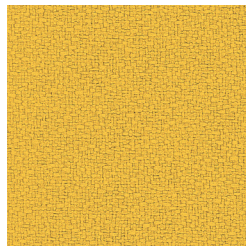
Goldenrod - BF8



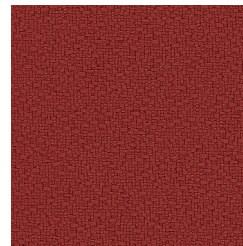
Pumpkin - BF2



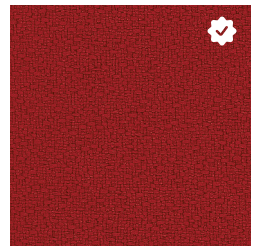
Lemon - KWY



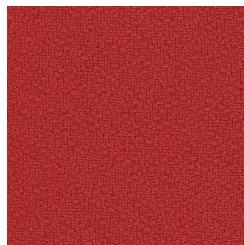
Sunshine - BF1



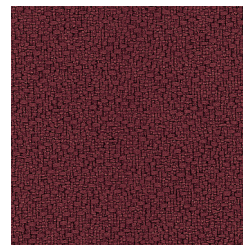
Poppy - BF6



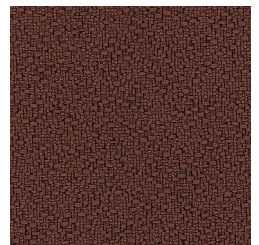
Red Delicious - BFN



Geranium - BF3



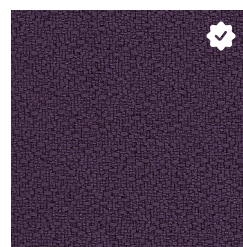
Mulberry - BF5



Henna - AR2



Orchid - KX0



Aubergine - BF4

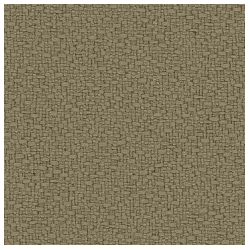


Coffee Bean - BFK

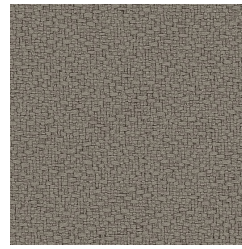


# ANCHORAGE Grade 3 - Panel Fabric

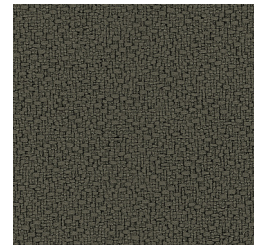
# Trendway >



Cumin - AQ4



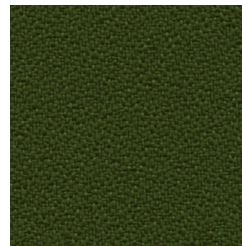
Goose - AQ9



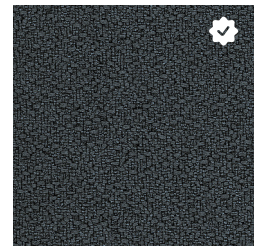
Fossil - AR3



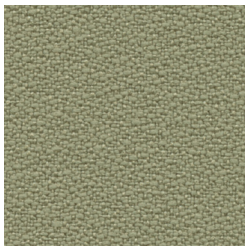
Green Apple - BFF



Fern - KWX



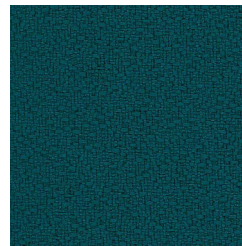
Graphite - BFM



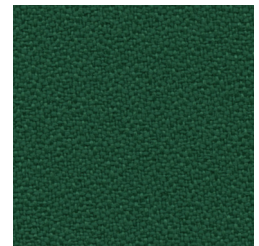
Eucalyptus - AQ3



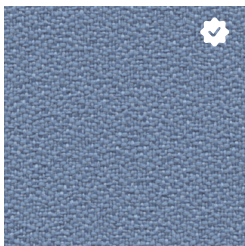
Willow - BFG



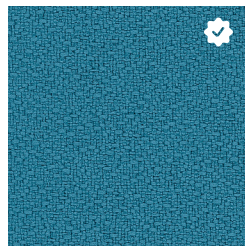
Sea - BFE



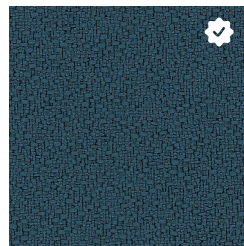
Turquoise - KX2



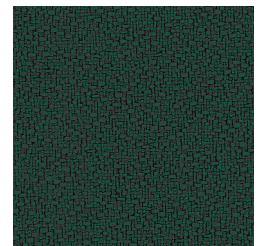
Pool - KX1



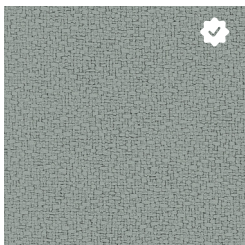
Waterfall - BXP



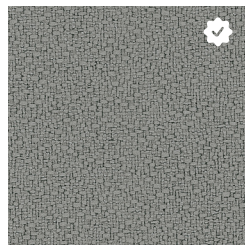
Deep Water - AQ7



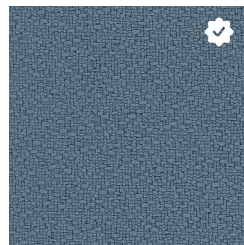
Pine Needle - BFH



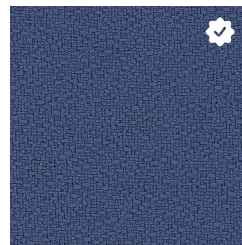
Slate - AQ5



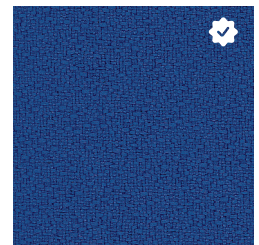
Asteroid - ARO



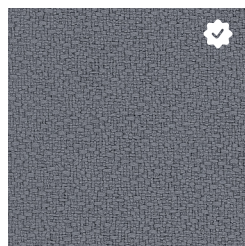
Quarry Blue - AQ6



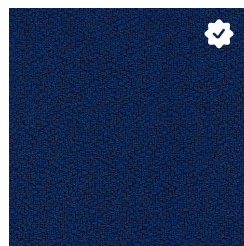
Thistle - BFC



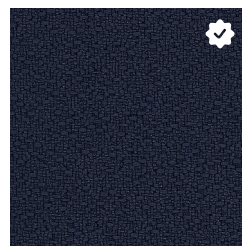
Lapis - BFA



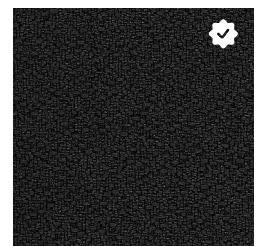
Wolf - BFJ



Cobalt - BF9



Midnight - BFD



Onyx - GEB

# LESS IS MORE SYSTEMS & FREESTANDING FINISHES

## GLAZING

### Plexiglass

01 Clear  
E3A Frost

### Tempered Glass\*

03 Clear  
05 Frost (Frameless Screen)

### 3form® Ecoresin®\*

E02 Solo Aqua Supermatte  
E01 Solo Supermatte  
E03 Spider

## PAINT

### Smooth

K	Charcoal	
DW	Designer White	
G	Gray	
L	Light Gray	
PA	Platinum*	
Y	Sand	
J	Stucco	

### Textured


TK	Textured Charcoal	
TDW	Textured Designer White	
TG	Textured Gray	
TL	Textured Light Gray	
TY	Textured Sand	
TJ	Textured Stucco	

### Frost

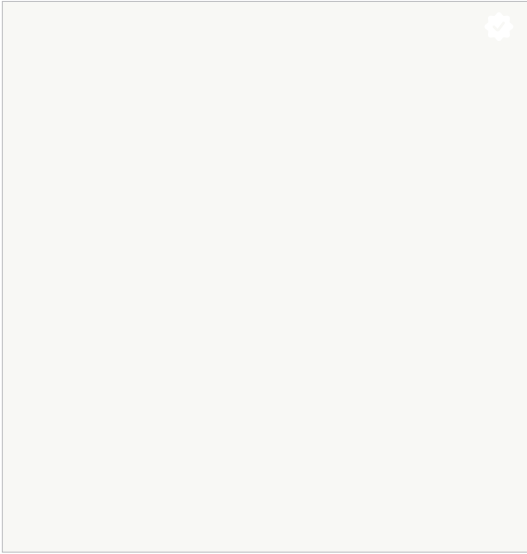
Frost finishes have a matte finish with metallic highlights.

FK	Frost Charcoal*
FDW	Frost Designer White*
FG	Frost Gray*
FL	Frost Light Gray*
FY	Frost Sand*
FJ	Frost Stucco*

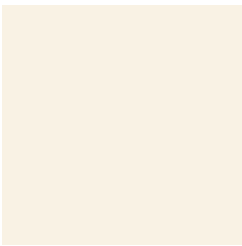
\* Upcharges apply. Refer to current price list for details.

 = Trendway Standard Fabric

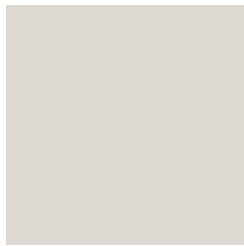




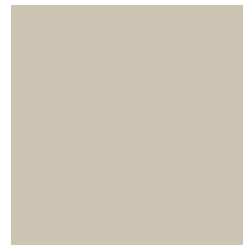
Designer White - DW❄️ | TDW❄️ | FDW



Stucco - J❄️ | TJ❄️ | FJ



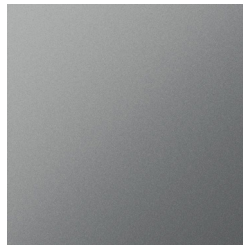
Light Gray - L❄️ | TL❄️ | FL



Sand - Y❄️ | TY❄️ | FY



Gray - G❄️ | TG❄️ | FG



Platinum - PA❄️



Charcoal - K❄️ | TK❄️ | FK

\* "Frost paint colors are Scheduled finishes. Lead-times may be longer".  
Upcharges apply."



# LESS IS MORE LAMINATE

## EDGE BANDING

### Solid Color

K	Charcoal	
E1	Designer White	
E6	Graphite	
G	Gray	
L	Light Gray	
PA	Platinum	
Y	Sand	
E7	Shadow	
E2	Slate Grey	
J	Stucco	

### Patterned








E8	Casual Linen	
E9	Classic Linen	
EB	Crisp Linen	
EJ	White Twill	
ED	Neutral Twill	
EE	Sarum Twill	
EG	Earthen Twill	
EH	Graphite Twill	

### Woodgrain

W8	Beigewood	
WE	Brazilwood	
W7	Empire Mahogany	
W7	Espresso Pearwood	
J98	Finnish Oak	
W5	Fusion Maple	
J9C	Phantom Charcoal	
J9B	Phantom Ecru	
J9A	Phantom Pearl	
J99	Walnut	
W6	Wild Cherry	

## STANDARD HIGH PRESSURE

### Solid Color | Grade 1

583	Charcoal	
J0C	Designer White	
J9D	Graphite	
520	Gray	
573	Light Gray	
J20	Sand	
J04	Shadow	
J08	Slate Grey	
J11	Stucco	

### Patterned | Grade 1

J6B	Casual Linen	
J6A	Classic Linen	
J69	Crisp Linen	
J9H	Earthen Twill	
JM4	Evening Tigris	
J9J	Graphite Twill	
JL6	Green Tigris	
JN2	Grey Tigris	
JP9	Natural Tigris	
J9F	Neutral Twill	
J9G	Sarum Twill	
551	Stipple Graphite	
553	Stipple Gray	
J09	White Tigris	
J9E	White Twill	

### Woodgrain | Grade 1

J0G	Beigewood	
J0D	Brazilwood	
J2A	Empire Mahogany	
J98	Finnish Oak	
J25	Fusion Maple	
J99	Walnut	
J1R	Wild Cherry	

## SURFACE TRENDS HIGH PRESSURE

### Nevamar | Grade 1

J3V	Calm Distinction
J3W	Cool Chic
J0F	Cordial Gray
JD5	Crown Cherry
J3U	Easy Elegance
J45	Illustrious Maple
K15	Kopi Susu
J47	Legendary Teak
J48	Luminary Teak
J49	Recon Oak
K17	Regency Mahogany
JF1	Stipple Birch
K16	Stipple Storm
J46	Stipple Straw
J40	Vous Fawn
J43	Vous Metal
J42	Vous Serene
J44	Vous Tempest
K18	Wrought Iron
K19	Yunnan

### Pionite | Grade 1

J3D	Appears Likatre
J3H	Cavalacade South
J3M	Cubicle Papel
J3K	Gold Pannin
J1X	Honey Maple
J3A	Leave Likatre
J39	Looks Likatre
J3G	Negotiating in Geneva
J3R	Passin Thru
J3C	Seems Likatre
J3T	Spice Walnut
J3J	Travelin Light
J3E	Vanilla Fiber
J3F	Wheat Fiber

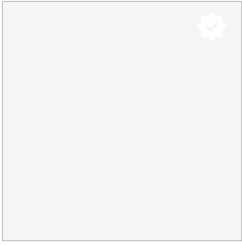
### Wilsonart | Grade 1

J33	Antique Brush
J1A	Canyon Zephyr
J15	Carbon Evolv
J1P	Cloud Nebula
J1D	Desert Zephyr
J1C	Loden Zephyr
J1B	Misted Zephyr
J1N	Navy Legacy
J14	Nickel Evolv
J32	Pewter Brush
J12	Silicon Evolv
J13	Titanium Evolv
J16	Tungsten Evolv
J1E	Twilight Zephyr
J17	Windswept Bronze
J18	Windswept Pewter

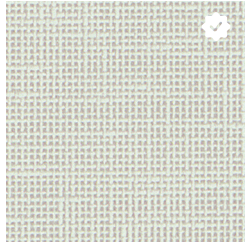


# HIGH PRESSURE LAMINATE Standard

Trendway >



Designer White - JOC



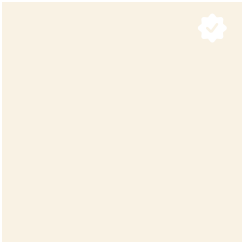
Crisp Linen - J69



Neutral Twill - J9F



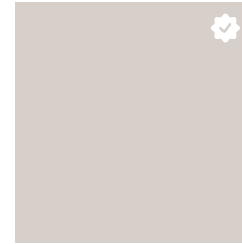
White Tigris - J09



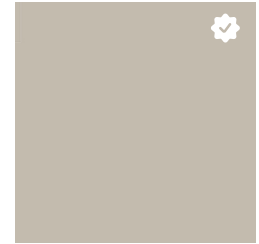
Stucco - J11



White Twill - J9E



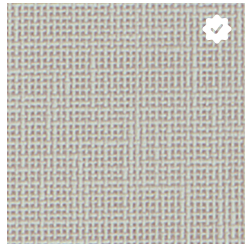
Light Gray - 573



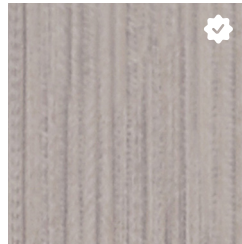
Sand - J20



Stipple Gray - 553



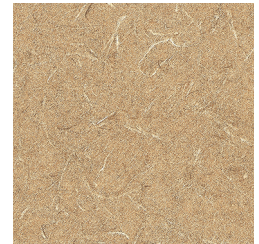
Classic Linen - J6A



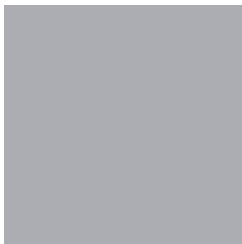
Sarum Twill - J9G



Gray Tigris - JN2



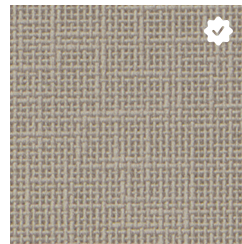
Natural Tigris - JP9



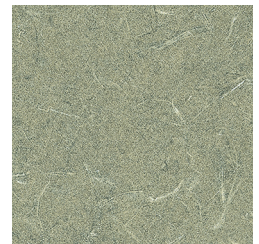
Gray - 520



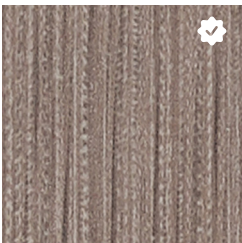
Shadow - J04



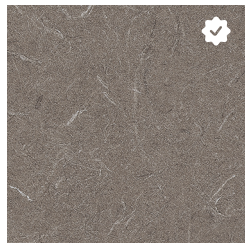
Casual Linen - J6B



Green Tigris - JL6



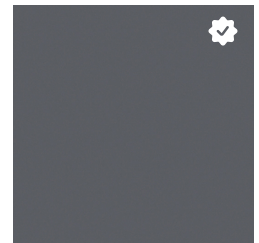
Earthen Twill - J9H



Evening Tigris - JM4



Slate Grey - J08



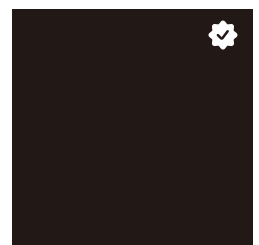
Graphite - J9D



Graphite Twill - J9J



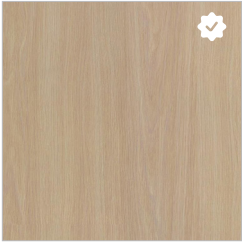
Stipple Graphite - 551



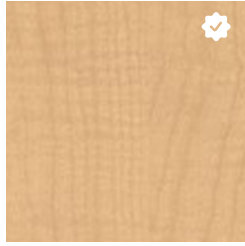
Charcoal - 583

**HIGH PRESSURE LAMINATE** Standard

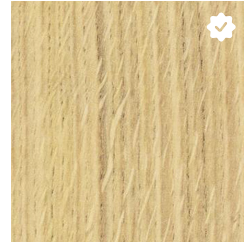
Trendway >



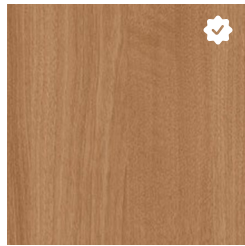
Beigewood - JOG



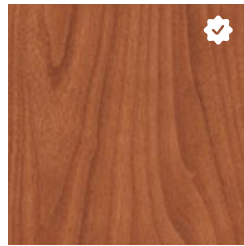
Fusion Maple - J25



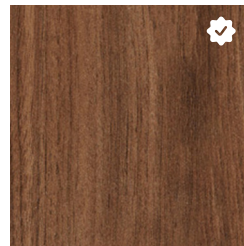
Finnish Oak - J98



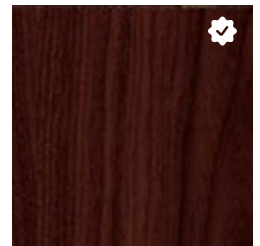
Brazilwood - JOD



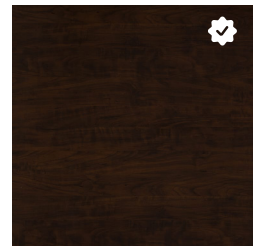
Wild Cherry - J1R



Walnut - J99



Empire Mahogany - J2A



Espresso Pearwood - J9X



# HIGH PRESSURE LAMINATE Surface Trends

Trendway >



Vanilla Fiber - J3E



Stipple Birch - JF1



Stipple Straw - J46



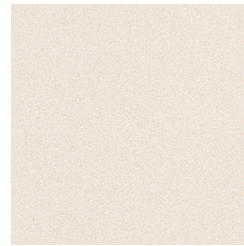
Vous Serene - J42



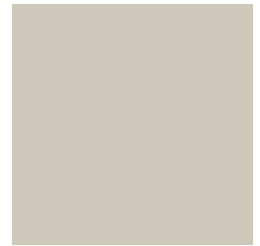
Cool Chic - J3W



Cubicle Papel - J3M



Cavalcade South - J3H



Cordial Gray - J0F



Wheat Fiber - J3F



Leave Likatre - J3A



Desert Zephyr - J1D



Canyon Zephyr - J1A



Silicon Ev - J12



Loden Zephyr - J1C



Nickel Ev - J14



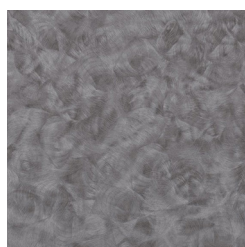
Kopi Susu - K15



Tungsten Ev - J16



Twilight Zephyr - J1C



Pewter Brush - J32



Gold Pannin - J3K



Vous Metal - J43

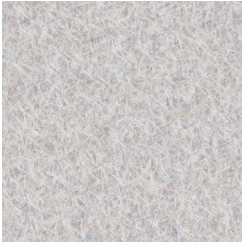


Passin Thru - J3R



**HIGH PRESSURE LAMINATE** Surface Trends

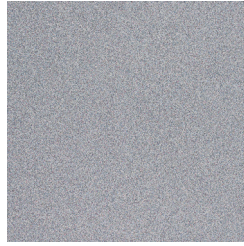
Trendway >



Titanium Ev - J13



Stipple Storm - K16



Cloud Nebula - J1P



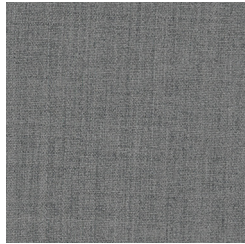
Negotiating in Geneva J3G



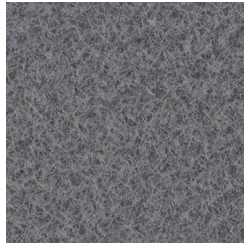
Misted Zephyr - J1B



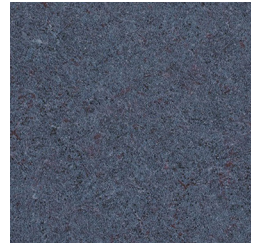
Windswept Pewter J18



Calm Distinction - J3V



Carbon Ev - J15



Navy Legacy - J1N



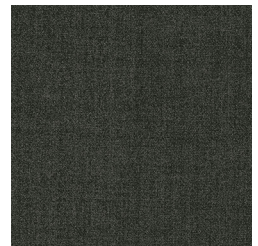
Vous Tempest - J44



Wrought Iron - K18



Yunnan - K19



Easy Elegance - J3U



Looks Likatre - J39



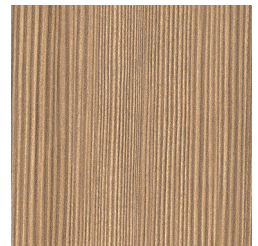
Luminary Teak - J48



Legendary Teak - J47



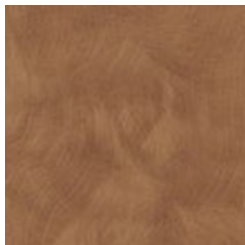
Illustrious Maple - J45



Appears Likatre - J3D



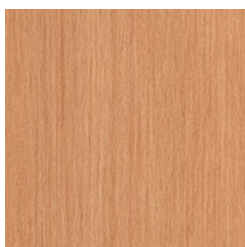
Honey Maple - J1X



Antique Brush - J33



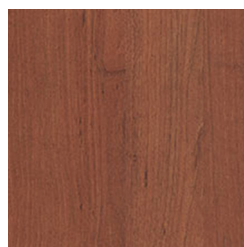
Windswept Bronze J17



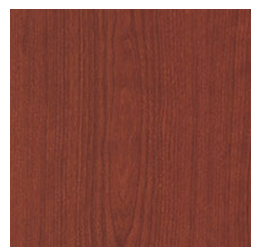
Recon Oak - J49



Seems Likatre - J3C



Spice Walnut - J3T



Crown Cherry - JD5