

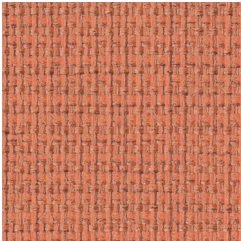
Platinum - Z2F



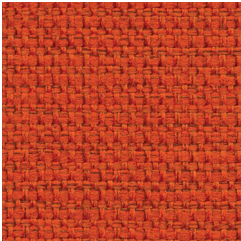
Bisque - Z27



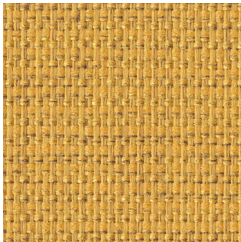
Sand - Z2H



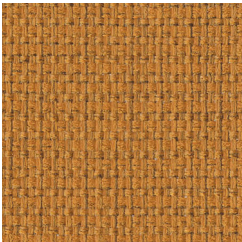
Coral - Z29



Scarlet - Z2J



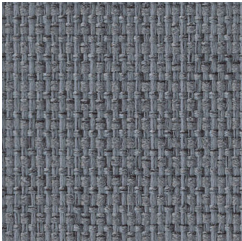
Honey - Z2C



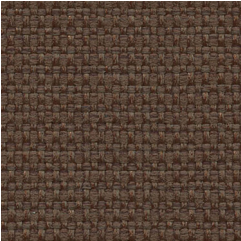
Ochre - Z2D



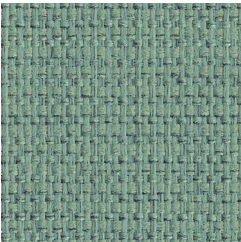
Sage - Z2G



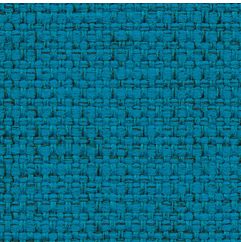
Slate - Z2K



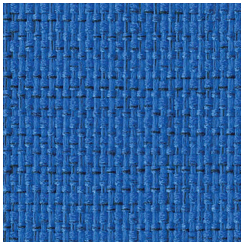
Hickory - Z2A



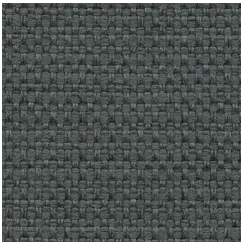
Viridian - Z2M



Peacock - Z2E



Admiral - Z26



Charcoal - Z28

INTUITION

Application	Consult current price lists for product applications
Grade	4 - Panel, B - Seating
Pattern	Directional
Content	55% Post-Consumer Recycled Polyester, 34% Pre-consumer Recycled Polyester, 11% Polyester
Weight	11.2 oz. per linear yard
Width	54"
Colorfastness to Light	40 Hours, Class 4
Colorfastness to Crocking	Grade 4 - Dry, Grade 3 - Wet
Flammability Rating	CA Technical Bulletin 117-2013 UFAC Fabric Classification - Class 1 NFPA 260 - Class 1 ASTM E84 - Class A
UL Listed	Meets UL requirements
Manufacturer	Duvaltex
Note	Color may vary slightly between manufacturer's dye lots
Care Instructions	To keep fabric from becoming soiled, manufacturer recommends frequent vacuuming or light brushing to remove dirt and grime. Spot clean when necessary with mild solvent, upholstery shampoo or foam from a mild detergent. If the fabric becomes soiled overall, use a professional cleaning service.