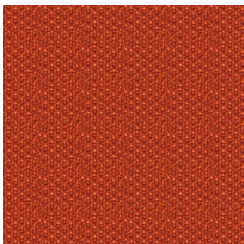


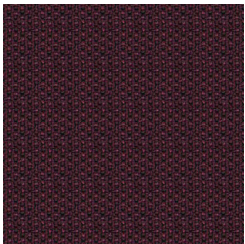
Beach - KTW



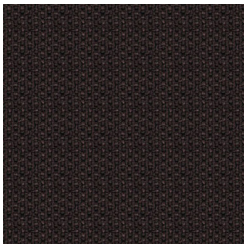
Dunes - KTX



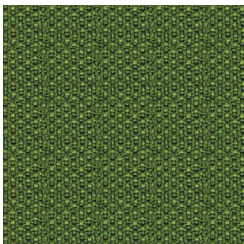
Harbor - KU0



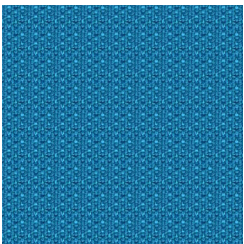
Port - KU4



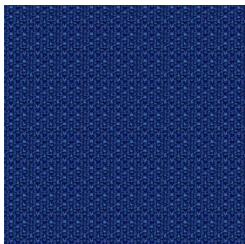
Holland - KU1



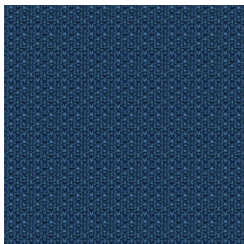
Spring Lake - KU7



Lakeside - KU2



Fountain - KTY



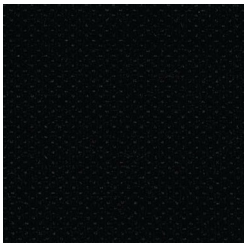
River - KU6



Pier - KU3



Rail Road - KU5



Anchor - KTV

HAVEN

Application	Consult current price lists for product applications
Grade	A
Pattern	Directional
Content	100% Repreve® Post-Consumer Recycled Polyester
Weight	13 oz. per linear yard
Width	54"
Colorfastness to Light	40 Hours, Class 4
Colorfastness to Crocking	Grade 4 - Dry, Grade 3 - Wet
Flammability Rating	CA Technical Bulletin 117-2013 UFAC Fabric Classification - Class 1 NFPA 260 - Class 1
Manufacturer	Camira
Note	Color may vary slightly between manufacturer's dye lots
Care Instructions	To keep fabric from becoming soiled, manufacturer recommends frequent vacuuming or light brushing to remove dirt and grime. Spot clean when necessary with mild solvent, upholstery shampoo or foam from a mild detergent. If the fabric becomes soiled overall, use a professional cleaning service.