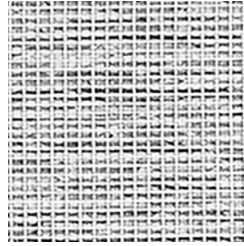


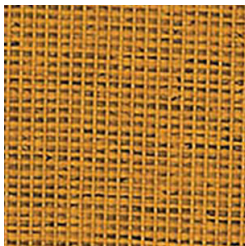
Wheat - KX9



Frost - KX8



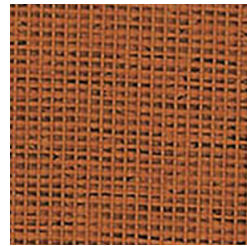
Almond - KTE



Sunni - KXA



Mustard - KTN



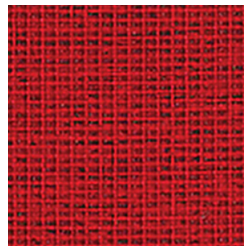
Copper - KXC



Tigerlily - KTU



Petal - KXP



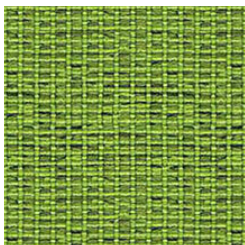
Tulip - KXR



Rose - KTR



Nutmeg - KTP



Gooseberry - KTJ



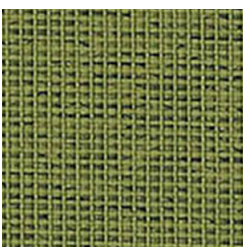
Lavender - KXT



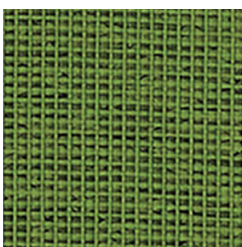
Berry - KXU



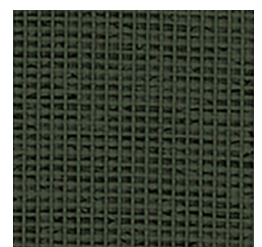
Chocolate - KXV



Evergreen - KXE



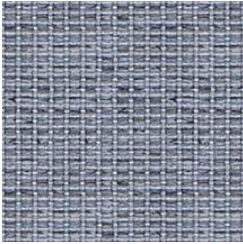
Fresh - KXD



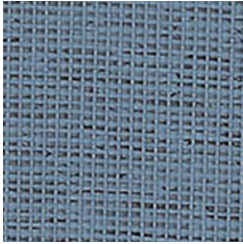
Military - KXG

GRAVITY Grade A - Seating Fabric

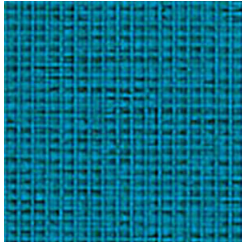
Trendway >



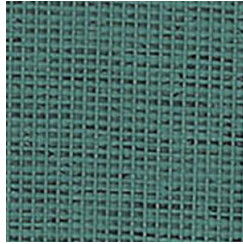
Dove - KTH



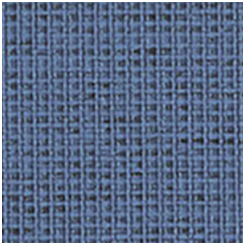
Frozen - KXN



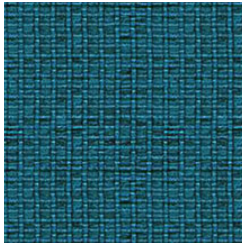
Aqua - KXK



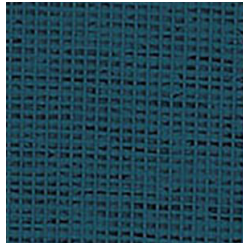
Lake - KXF



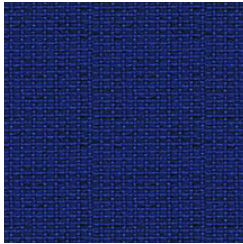
Dewdrop - KXM



Botanic - KTF



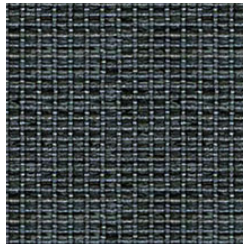
Lagoon - KXJ



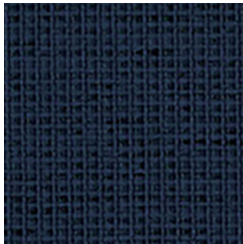
Ice - KTM



Brook - KTG



Slate - KTT



Navy Blue - KXH



Black - KXW



Gravel - KTK

GRAVITY

Application	Consult current price lists for product applications
Grade	A
Pattern	Directional
Content	76% Polyester, 18% Post-Industrial Polyester, 6% Closed Loop PolyesterPolyester
Weight	12.9 oz. per linear yard
Width	54"
Colorfastness to Light	40 Hours, Class 5
Colorfastness to Crocking	Grade 4 - Dry, Grade 3 - Wet
Flammability Rating	CA Technical Bulletin 117-2013 UFAC Fabric Classification - Class 1 NFPA 260 - Class 1
Manufacturer	Camira
Note	Color may vary slightly between manufacturer's dye lots
Care Instructions	To keep fabric from becoming soiled, manufacturer recommends frequent vacuuming or light brushing to remove dirt and grime. Spot clean when necessary with mild solvent, upholstery shampoo or foam from a mild detergent. If the fabric becomes soiled overall, use a professional cleaning service.