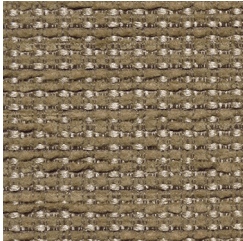
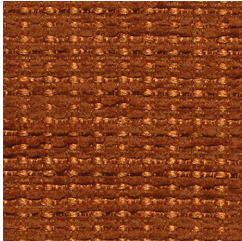


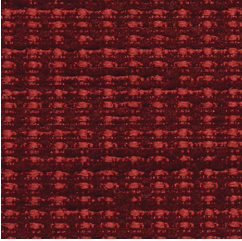
Natural - Z16



Flax - Z11



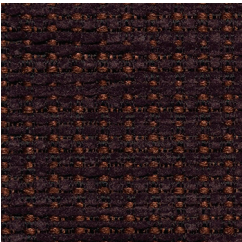
Terracotta - Z1C



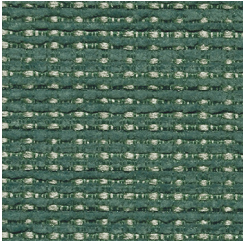
Cerise - Z10



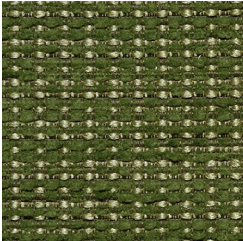
Iris - Z14



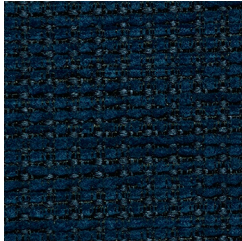
Mahogany - Z15



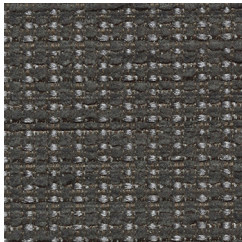
Breeze - ZOY



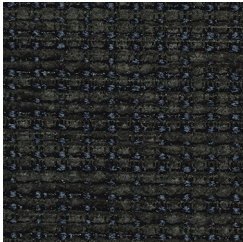
Pear - Z1A



Pacific - Z19



Grey Mist - Z13



Graphite - Z12



Noir - Z18

EVOKE

| | |
|----------------------------------|---|
| Application | Consult current price lists for product applications |
| Grade | B |
| Pattern | Directional |
| Content | 47% Polyester, 29% Pre-Consumer Recycled Polyester, 24% Post-Consumer Recycled Polyester |
| Weight | 15.1 oz. per linear yard |
| Width | 54" |
| Colorfastness to Light | 40 Hours, Class 4 |
| Colorfastness to Crocking | Grade 4 - Dry, Grade 3 - Wet |
| Flammability Rating | CA Technical Bulletin 117-2013 UFAC Fabric Classification - Class 1 NFPA 260 - Class 1 |
| Manufacturer | Duvaltex |
| Note | Color may vary slightly between manufacturer's dye lots |
| Care Instructions | To keep fabric from becoming soiled, manufacturer recommends frequent vacuuming or light brushing to remove dirt and grime. Spot clean when necessary with mild solvent, upholstery shampoo or foam from a mild detergent. If the fabric becomes soiled overall, use a professional cleaning service. |