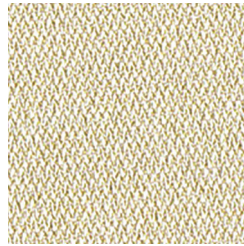


ERA Grade 2 - Panel Fabric
Grade A - Seating Fabric

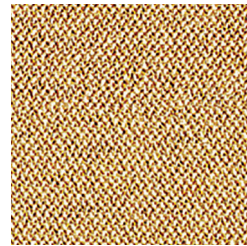
Trendway >



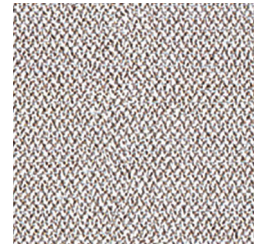
Futurist - KT1



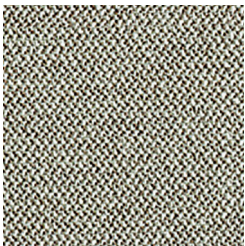
Transition - KY5



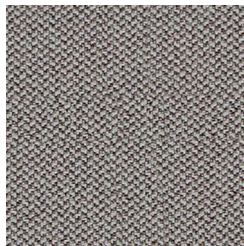
Splitsecond - KY6



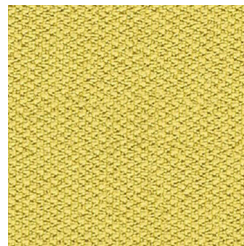
Quota - KYH



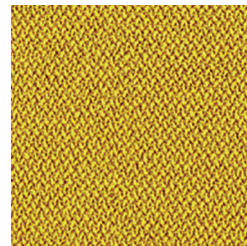
Prompt - KYN



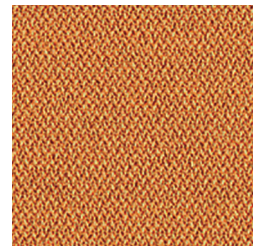
Generation - KT2



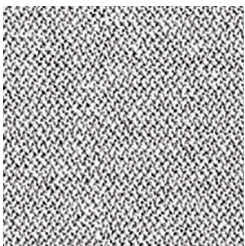
Lifetime - KT4



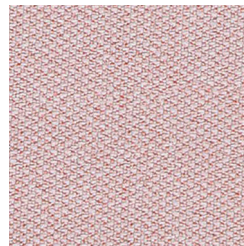
Occasion - KY7



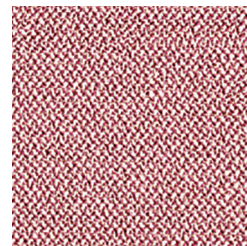
Measure - KY2



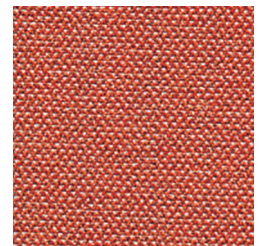
Memo - KYP



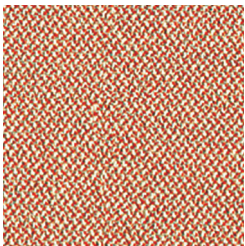
Calendar - KRT



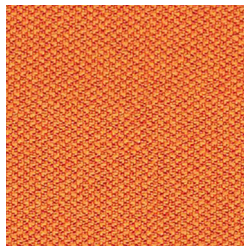
Date - KXY



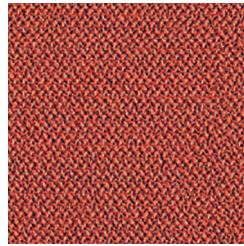
Turn - KY1



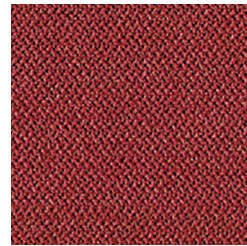
Sequence - KY0



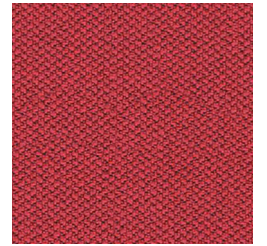
Span - KTA



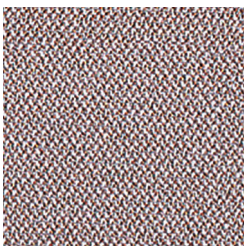
Experience - KY4



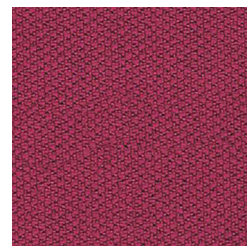
Extent - KY3



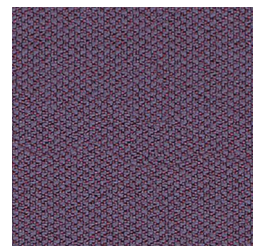
Cycle - KRV



Occurrence - KXX



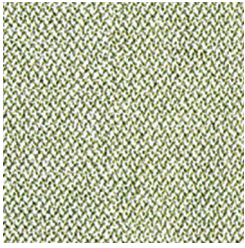
Phase - KT7



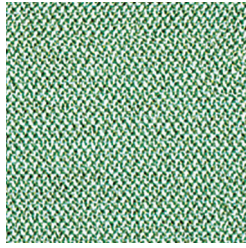
Prime - KT9

ERA Grade 2 - Panel Fabric
Grade A - Seating Fabric

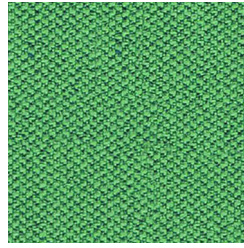
Trendway >



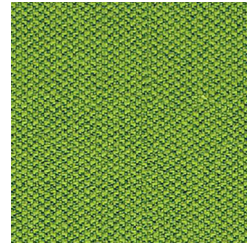
Analogue - KY8



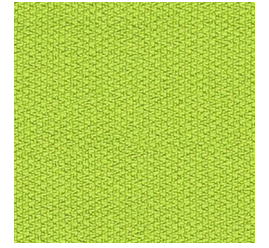
Notation - KYC



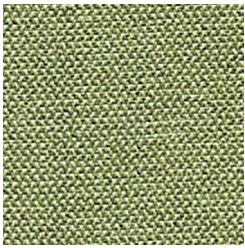
Event - KRW



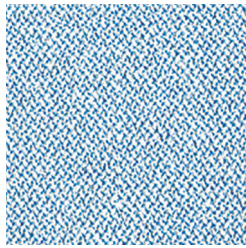
Timelapse - KTD



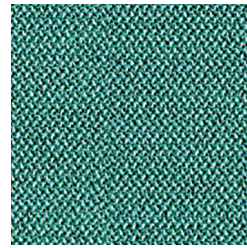
Period - KT6



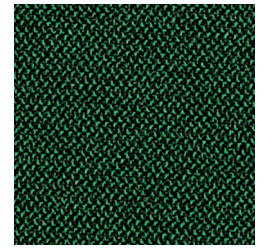
Endurance - KY9



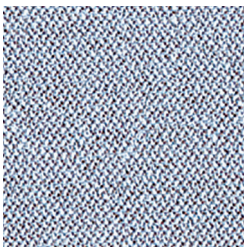
Allowance - KYE



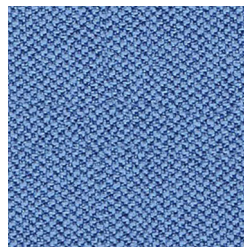
Rest - KYD



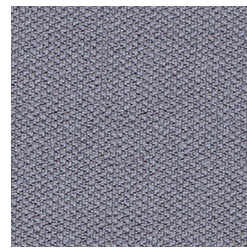
Signature - KYA



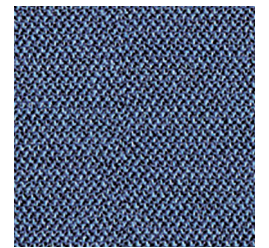
Youth - KYF



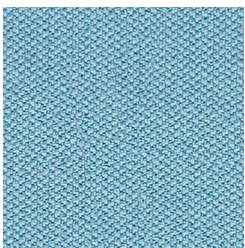
Chapter - KRU



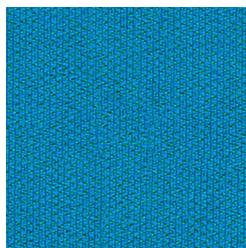
Forecast - KRY



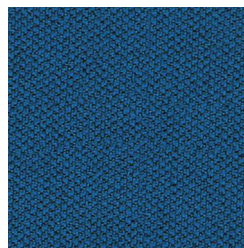
Range - KYJ



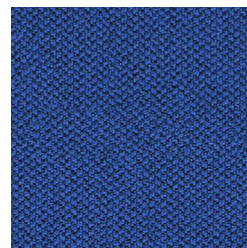
Aeon - KRR



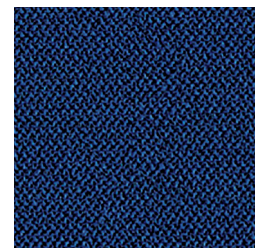
Everlasting - KRX



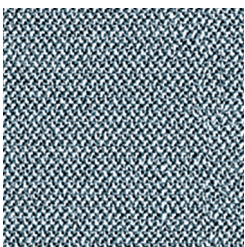
Stage - KTC



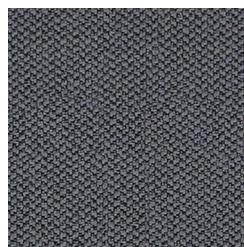
Perennial - KT5



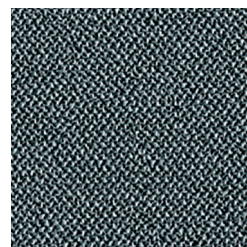
Maturity - KYG



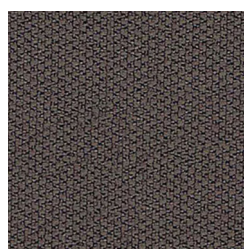
Late - KYK



Present - KT8



Elapse - KYM



History - KT3



Forward - KTO

ERA

Application	Consult current price lists for product applications
Grade	2 - Panel, A - Seating
Pattern	Directional
Content	100% Polyester
Weight	12.96 oz. per linear yard
Width	54"
Colorfastness to Light	40 Hours, Class 4
Colorfastness to Crocking	Grade 4.5 - Dry, Grade 4.5 - Wet
Flammability Rating	CA Technical Bulletin 117-2013 UFAC Fabric Classification - Class 1 NFPA 260 - Class 1 ASTM E84 - Class A
UL Listed	Meets UL requirements
Manufacturer	Camira
Note	Color may vary slightly between manufacturer's dye lots
Care Instructions	To keep fabric from becoming soiled, manufacturer recommends frequent vacuuming or light brushing to remove dirt and grime. Spot clean when necessary with mild solvent, upholstery shampoo or foam from a mild detergent. If the fabric becomes soiled overall, use a professional cleaning service.