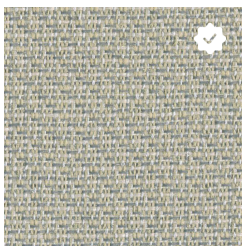


White Linen - KDD



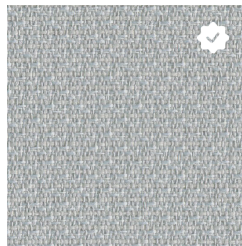
Lemon Zest - KDE



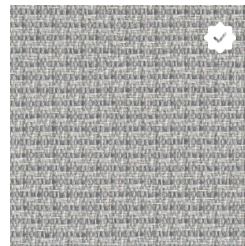
Mist Grey - KDC



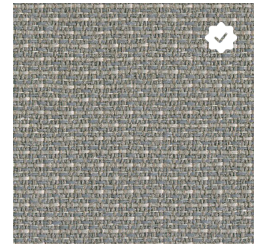
Fern - KD8



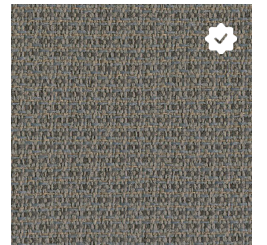
Whisper - KD9



Dove - KDA



Cement - KDG



Elephant - KDF

PURSUIT

Application	Vertical Surface Fabrics
Grade	1
Pattern	Directional
Content	100% Pre-Consumer Recycled Polyester
Weight	9.1 oz. per linear yard
Width	66"
Colorfastness to Light	40 Hours, Class 4
Colorfastness to Crocking	Grade 4 - Dry, Grade 3 - Wet
Flammability Rating	ASTM E-84, Class 1 or A
UL Listed	Meets UL requirements
Manufacturer	Guilford of Maine
Note	Color may vary slightly between manufacturer's dye lots
Care Instructions	To keep fabric from becoming soiled, manufacturer recommends frequent vacuuming or light brushing to remove dirt and grime. Spot clean when necessary with mild solvent, upholstery shampoo or foam from a mild detergent. If the fabric becomes soiled overall, use a professional cleaning service.