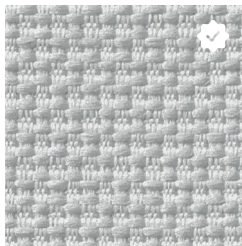


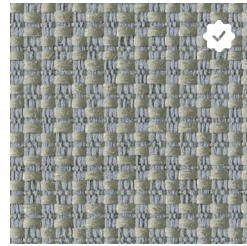
Seagull - KDH



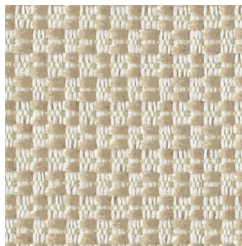
Swan - KDR



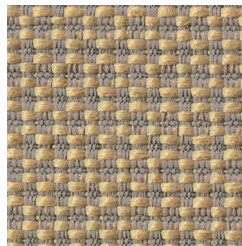
Rocket Ship - KDJ



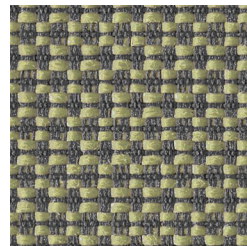
Foggy - KDM



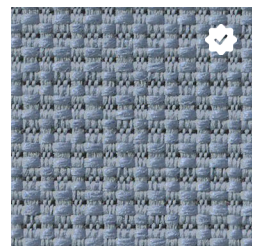
Coconut - KDN



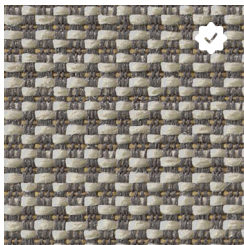
Butter Rum - KDP



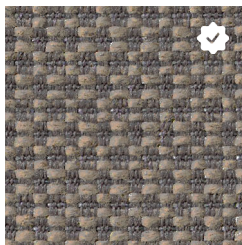
Marsh - KDU



Neptune - KDT



Husky - KDK



Smoky Quartz - KDV

# INTERMIX

<b>Application</b>	Vertical Surface Fabrics
<b>Grade</b>	1
<b>Pattern</b>	Directional
<b>Content</b>	100% Pre-Consumer Recycled Polyester
<b>Weight</b>	15.3 oz. per linear yard
<b>Width</b>	66"
<b>Colorfastness to Light</b>	40 Hours, Class 4
<b>Colorfastness to Crocking</b>	Grade 4 - Dry, Grade 3 - Wet
<b>Flammability Rating</b>	ASTM E-84, Class 1 or A
<b>UL Listed</b>	Meets UL requirement
<b>Manufacturer</b>	Guilford of Maine
<b>Note</b>	Color may vary slightly between manufacturer's dye lots
<b>Care Instructions</b>	To keep fabric from becoming soiled, manufacturer recommends frequent vacuuming or light brushing to remove dirt and grime. Spot clean when necessary with mild solvent, upholstery shampoo or foam from a mild detergent. If the fabric becomes soiled overall, use a professional cleaning service.