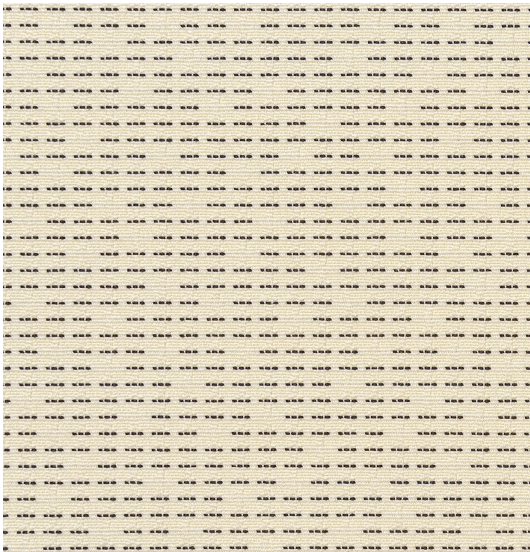
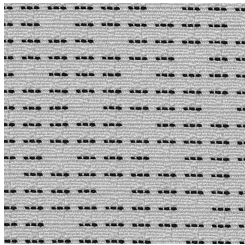


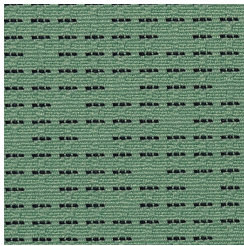
INPUT Grade A - Seating Fabric



Bisque - Z1D



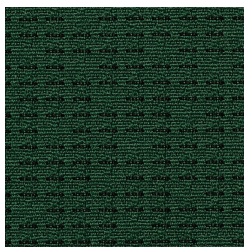
Cloud - Z1E



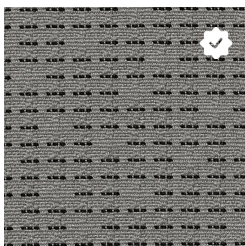
Mint - Z1T



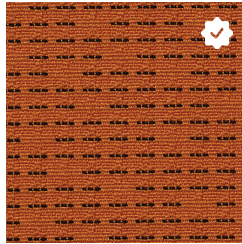
Lime - Z1P



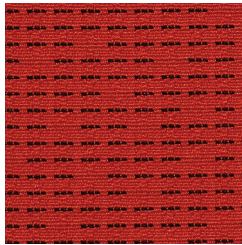
Pine - Z1V



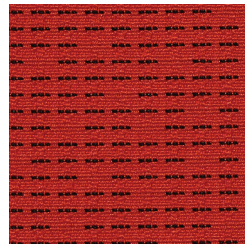
Dove - Z1J



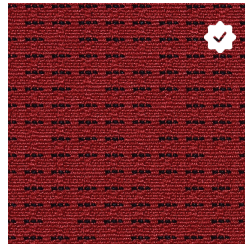
Squash - Z1Y



Flame - Z1K



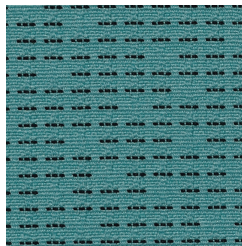
Flame - Z1K



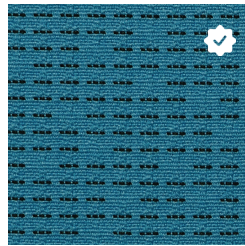
Crimson - Z1G



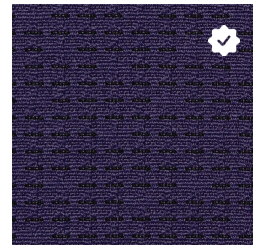
Raisin - Z1W



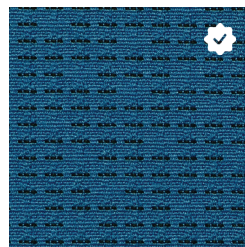
Tiffany - Z2O



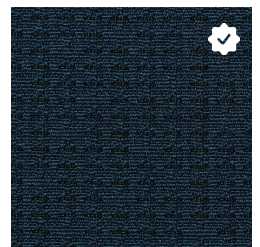
Sky - Z1X



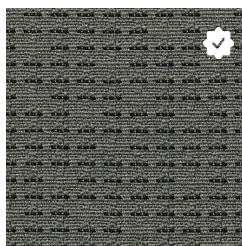
Orchid - Z1U



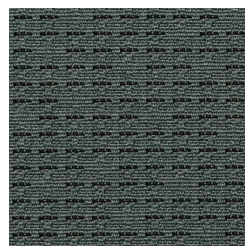
Delft - Z1H



Midnight - Z1R



Fossil - Z1M



Coal - Z1F



Jet - Z1N

 = Trendway Standard Fabric

INPUT

Application	Consult current price lists for product applications
Grade	A
Pattern	Directional
Content	94% Post-Consumer Recycled Polyester, 6% Pre-Consumer Recycled Polyester
Weight	11.1 oz. per linear yard
Width	54"
Colorfastness to Light	40 Hours, Class 4
Colorfastness to Crocking	Grade 4 - Dry, Grade 3 - Wet
Flammability Rating	CA Technical Bulletin 117-2013 UFAC Fabric Classification - Class 1 NFPA 260 - Class 1
Manufacturer	Duvaltex
Note	Color may vary slightly between manufacturer's dye lots
Care Instructions	To keep fabric from becoming soiled, manufacturer recommends frequent vacuuming or light brushing to remove dirt and grime. Spot clean when necessary with mild solvent, upholstery shampoo or foam from a mild detergent. If the fabric becomes soiled overall, use a professional cleaning service.