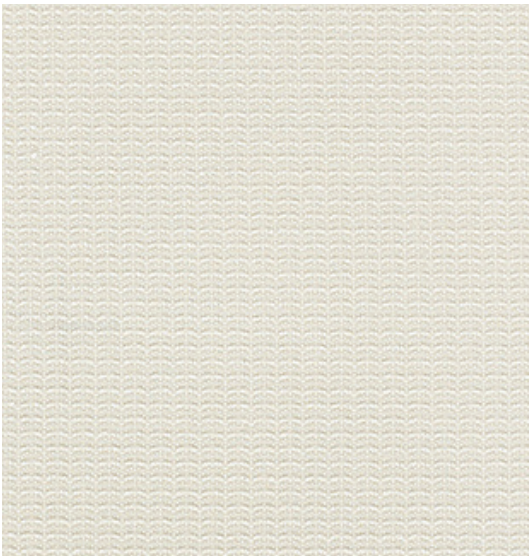


GLINT Grade 3 - Panel Fabric



Pearl - KGA



Opal - KG9



Gypsum - KG7



Rune - KGD



Turret - KGH



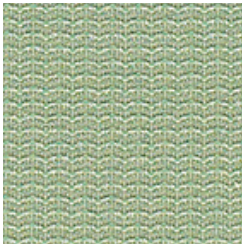
Serene - KGE



Sisal - KGG



Column - KG5



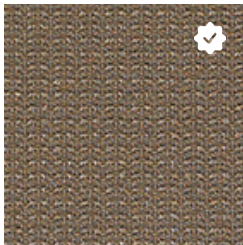
Vera - KGJ



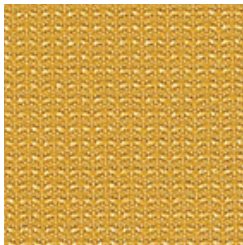
Relic - KGC



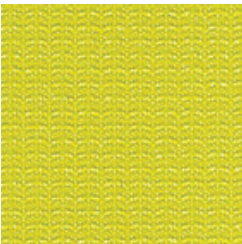
Barley - KG3



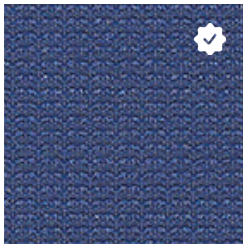
Pumice - KJ2



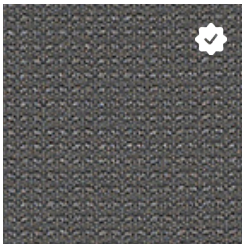
Gobi - KG6



Note - KG8



Caspian - KG4



Shale - KGF

Trendway >

= Trendway Standard Fabric

GLINT

Application	Vertical Surface Fabrics
Grade	3
Pattern	Directional
Content	100% Post-Consumer Recycled Polyester
Weight	16.96 oz. per linear yard
Width	66"
Colorfastness to Light	40 Hours, Class 4.5
Colorfastness to Crocking	Grade 3 - Dry, Grade 3 - Wet
Flammability Rating	ASTM E-84, Class 1 or A
UL Listed	Meets UL requirements
Manufacturer	Momentum
Note	Color may vary slightly between manufacturer's dye lots
Care Instructions	To keep fabric from becoming soiled, manufacturer recommends frequent vacuuming or light brushing to remove dirt and grime. Spot clean when necessary with mild solvent, upholstery shampoo or foam from a mild detergent. If the fabric becomes soiled overall, use a professional cleaning service.