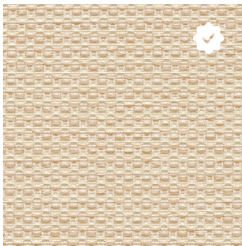
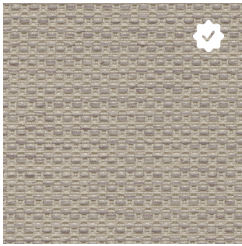


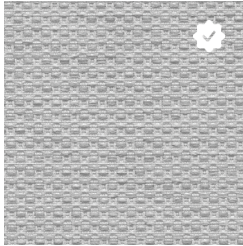
Coin - Z4K



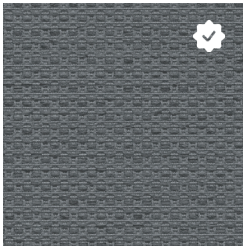
Ecu - Z4M



Mushroom - Z4P



Shadow - Z4N



Pumice - Z4R

# CHASE

|                                  |  |
|----------------------------------|--|
| <b>Application</b>               | Vertical Surface Fabrics   |
| <b>Grade</b>                     | 1  |
| <b>Pattern</b>                   | Directional  |
| <b>Content</b>                   | 74% polyester, 26% post-consumer recycled polyester  |
| <b>Weight</b>                    | 13.3 ± 1.0 oz. per linear yard   |
| <b>Width</b>                     | 66" min. useable   |
| <b>Colorfastness to Light</b>    | Grade 4/40 hrs. min.   |
| <b>Colorfastness to Crocking</b> | Grade 4 min. dry & Grade 3 min. wet  |
| <b>Flammability Rating</b>       | ASTM E 84 Class 1 or A   |
| <b>Note</b>                      | Color may vary slightly between manufacturer's dye lots  |
| <b>Care Instructions</b>         | Standard Care Label W-S. Clean with water based cleaning agents, foam or pure, water free solvents. Vacuuming or light brushing is recommended to prevent dust and soil buildup. May also be disinfected with hydrogen peroxide, alcohol, and quaternary ammonium (quat) based cleaners. |