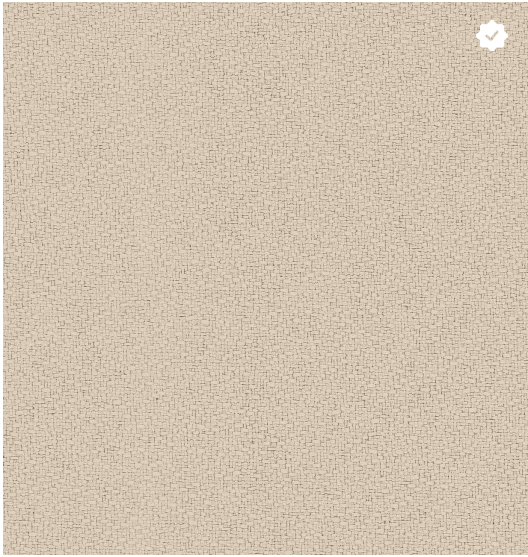
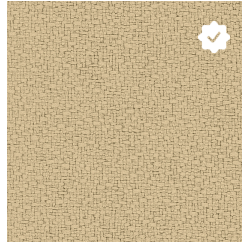


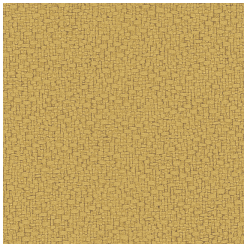
ANCHORAGE Grade 3 - Panel Fabric



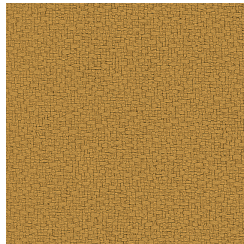
Birch - AQ8



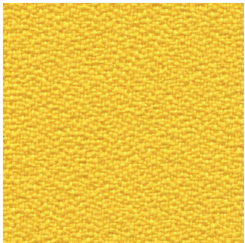
Vanilla - AQ1



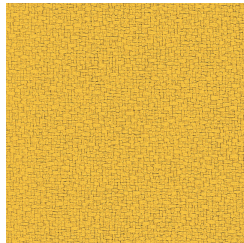
Straw - B9P



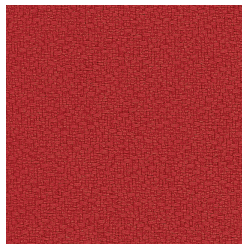
Goldenrod - BF8



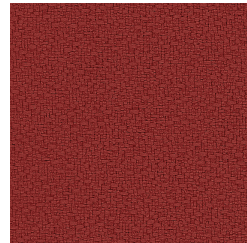
Lemon - KWY



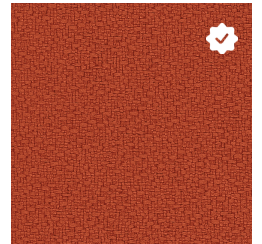
Sunshine - BFI



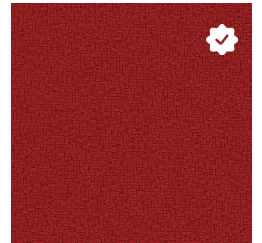
Geranium - BF3



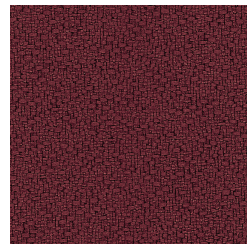
Poppy - BF6



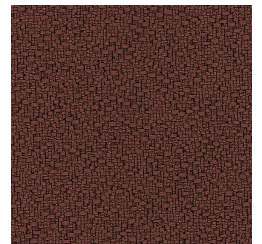
Pumpkin - BF2



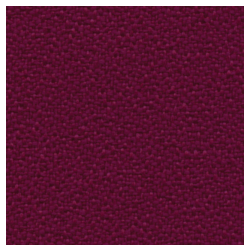
Red Delicious - BFN



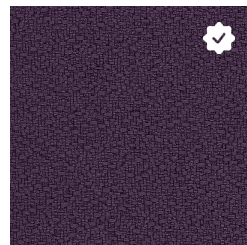
Mulberry - BF5



Henna - AR2



Orchid - KXO

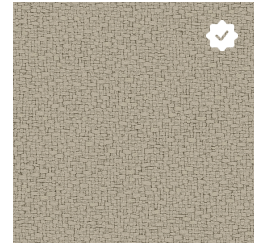


Aubergine - BF4



Coffee Bean - BFK

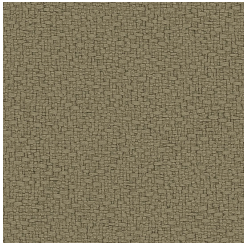
Trendway >



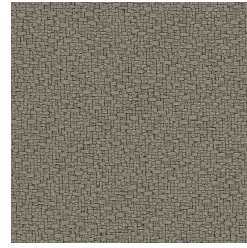
Angora - AR1

ANCHORAGE Grade 3 - Panel Fabric

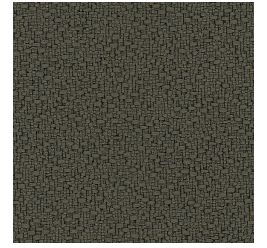
Trendway >



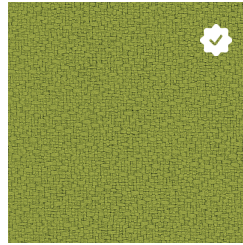
Cumin - AQ4



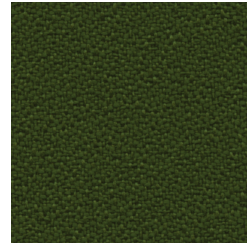
Goose - AQ9



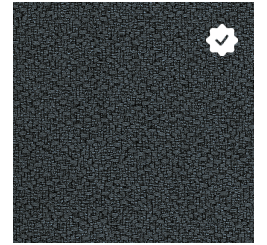
Fossil - AR3



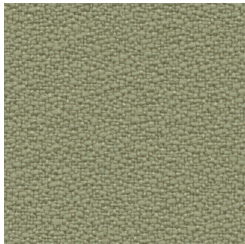
Green Apple - BFF



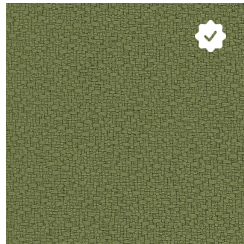
Fern - KWX



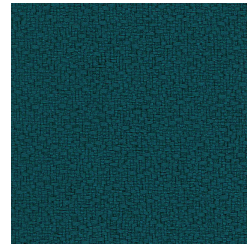
Graphite - BFM



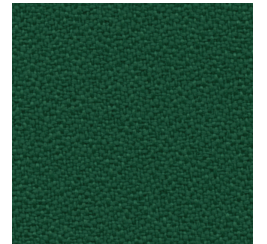
Eucalyptus - AQ3



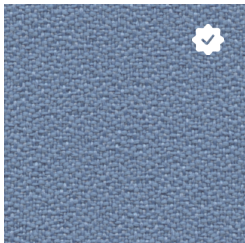
Willow - BFG



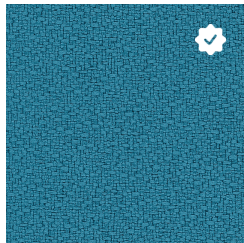
Sea - BFE



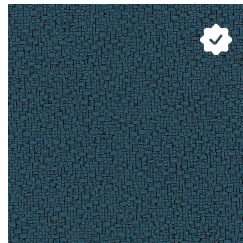
Turquoise - KX2



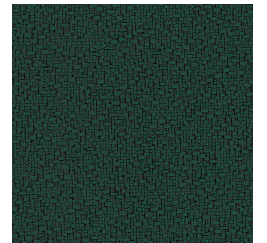
Pool - KX1



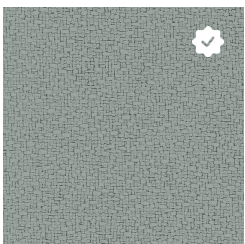
Waterfall - BXP



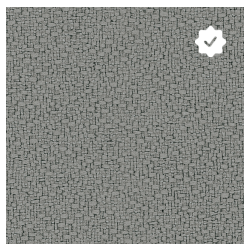
Deep Water - AQ7



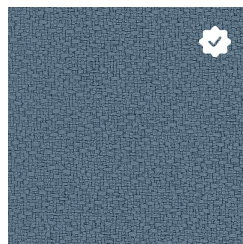
Pine Needle - BFH



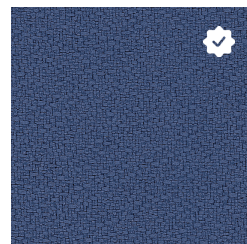
Slate - AQ5



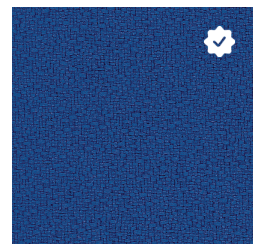
Asteroid - ARO



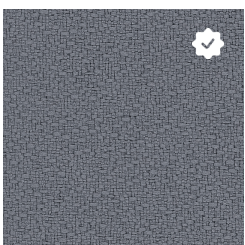
Quarry Blue - AQ6



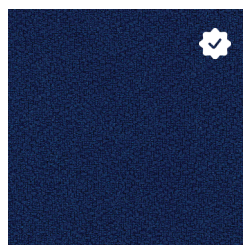
Thistle - BFC



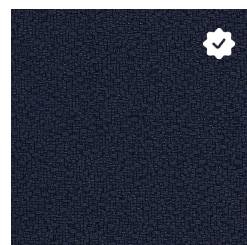
Lapis - BFA



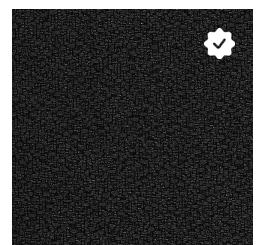
Wolf - BFJ




Cobalt - BF9



Midnight - BFD



Onyx - GEB

 = Trendway Standard Fabric

ANCHORAGE

Application	Vertical Surface Fabrics
Grade	3
Pattern	Non-Directional
Content	65% Pre-Consumer Recycled Polyester, 35% Post-Consumer Recycled Polyester
Weight	15 oz. per linear yard
Width	66"
Colorfastness to Light	40 Hours, Class 4
Colorfastness to Crocking	Grade 4 - Dry, Grade 3 - Wet
Flammability Rating	CA Technical Bulletin 117-2013 UFAC Fabric Classification - Class 1 NFPA 260 - Class 1 ASTM E84 - Class A
UL Listed	Meets UL requirements
Manufacturer	Duvaltex
Note	Color may vary slightly between manufacturer's dye lots
Care Instructions	To keep fabric from becoming soiled, manufacturer recommends frequent vacuuming or light brushing to remove dirt and grime. Spot clean when necessary with mild solvent, upholstery shampoo or foam from a mild detergent. If the fabric becomes soiled overall, use a professional cleaning service.